

AUSTRALIAN CONSTRUCTION

Managing risk through
digitisation of data



Max Soyref, PhD
Director, KPMG Origins



**With structural problems
like falling demand for
office space and rise of
online retail...**

Investors in property are
increasing their focus on
alternatives such as build-
to-rent and student
housing

Australian BTR market has a lot of untapped potential

\$9.67
trill

Australian Residential
Sector Value

\$16.87
bill

Current BTR Value

\$290
bill

Potential Sector Value

<https://www.propertycouncil.com.au/wp-content/uploads/2023/04/PCA-Build-to-Rent-housing-advice-Stage-1-2-Final-Public-Release-Update-04.04.23.pdf>

Residential construction is inherently risky

39%

Building
Reported
Serious
Defects

PROBABILITY OF SERIOUS DEFECTS ARISING*



Waterproofing



Fire Safety



Enclosures



Structural



Key Services

\$332K

Average
expenditure to
rectify

<https://nsw.strata.community/research-on-serious-building-defects-in-nsw-strata-communities/>

How might **investors gain greater confidence in the asset class and manage risk appropriately?**

A paradigm shift is required to better manage risk

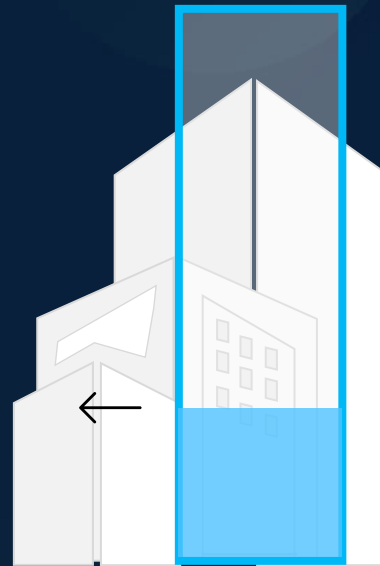
From Asset Class



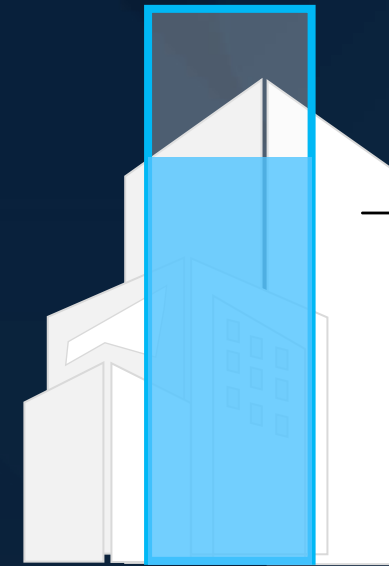
To the specific Asset



Lower level of data on building materials, practitioners, design and construction certificates



BUILDING 1



BUILDING 2

Higher level of data on building materials, practitioners, design and construction certificates

Building Trustworthy Indicator



Driving confidence in the built environment through high-quality data



TRUSTED PARTICIPANTS



CONSTRUCTION MATERIALS



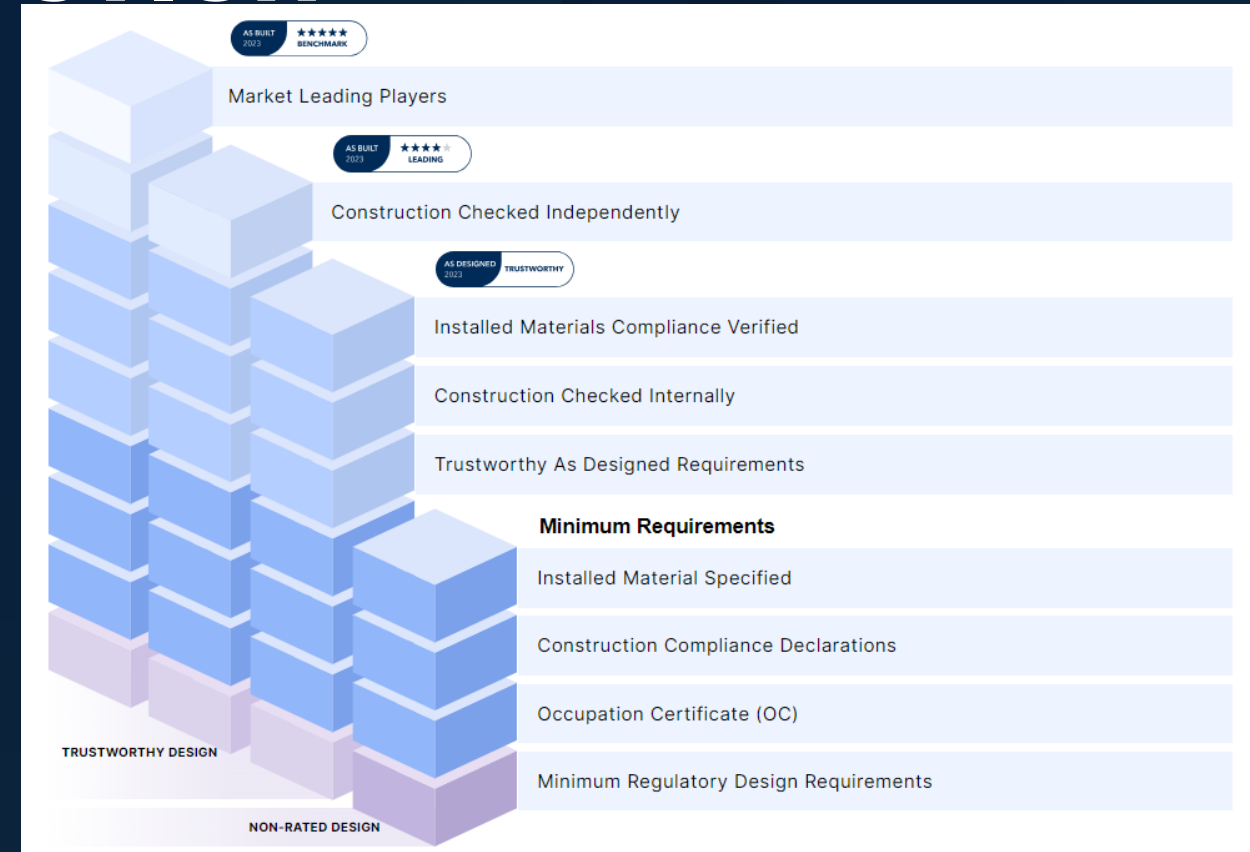
DESIGN AND CONSTRUCTION PROCESSES

Building Trustworthy Indicator

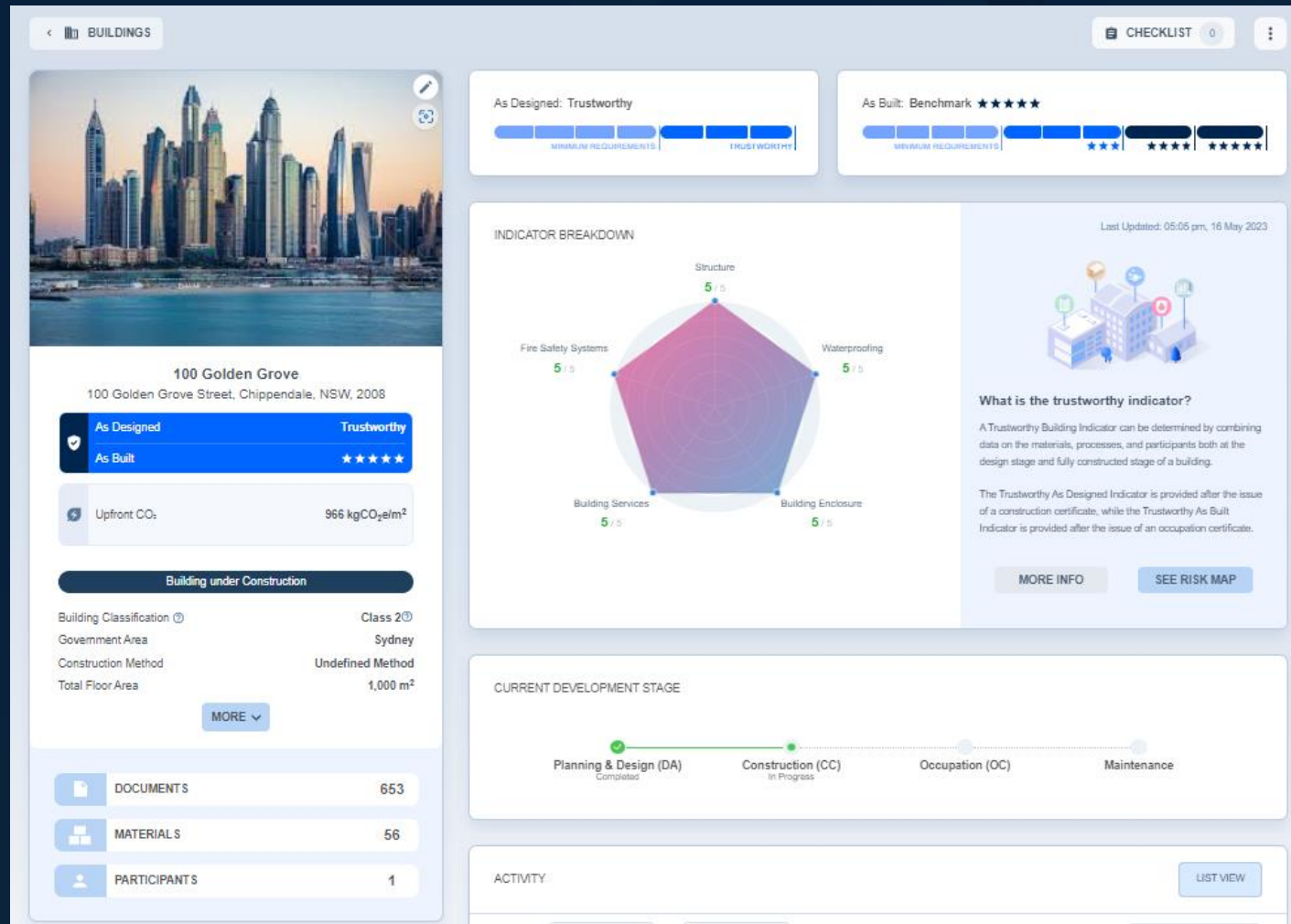
DESIGN



CONSTRUCTION



Building Trustworthy Indicator



Building Trustworthy Indicator



**Understand
quality and
trustworthiness
of an asset**

**Dive deeper
into potential
areas of risk**

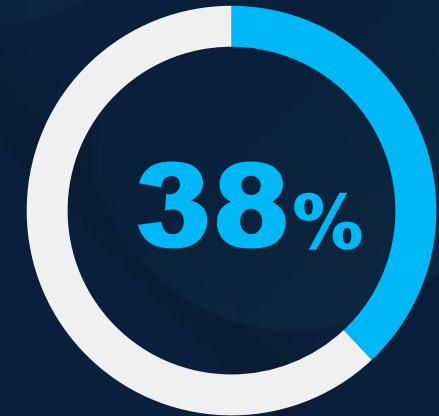
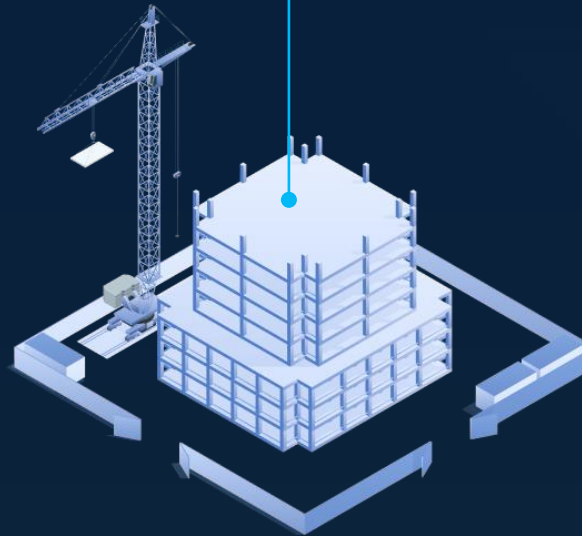
**Access tailored
insurance and
financing products**

Extending beyond trustworthiness

Measure embodied carbon emissions

Report Scope 3 related metrics

Access sustainability-linked capital



of global greenhouse gas emissions are **attributable to buildings**, including operational and embodied



**Questions? Let's connect:
hello@kpmgorigins.com**

KPMGorigins.com



©2023 KPMG, an Australian partnership and a member firm of the KPMG global organisation of independent member firms affiliated with KPMG International Limited, a private English company limited by guarantee. All rights reserved.

The KPMG name and logo are trademarks used under license by the independent member firms of the KPMG global organisation.

The information contained in this document is of a general nature and is not intended to address the objectives, financial situation or needs of any particular individual or entity. It is provided for information purposes only and does not constitute, nor should it be regarded in any manner whatsoever, as advice and is not intended to influence a person in making a decision, including, if applicable, in relation to any financial product or an interest in a financial product. Although we endeavour to provide accurate and timely information, there can be no guarantee that such information is accurate as of the date it is received or that it will continue to be accurate in the future. No one should act on such information without appropriate professional advice after a thorough examination of the particular situation.

To the extent permissible by law, KPMG and its associated entities shall not be liable for any errors, omissions, defects or misrepresentations in the information or for any loss or damage suffered by persons who use or rely on such information (including for reasons of negligence, negligent misstatement or otherwise).

Liability limited by a scheme approved under Professional Standards Legislation.

Document Classification: KPMG Confidential